

ceramir[®]

CROWN & BRIDGE



Does your cement...
Clean-up effortlessly?
Set at a high pH?
Get stronger over time?
Ours does.

REDEFINING DENTAL CEMENT

CERAMIR® Crown & Bridge

Ceramir Crown & Bridge - the revolutionary bioceramic dental luting cement and the first product in a new class of unique materials, performs with outstanding effectiveness, durability, and ease-of-use. Ceramir C&B sets a new standard of performance for the permanent cementation of metal and porcelain fused to metal (PFM) crowns and bridges, gold inlays and onlays, cast and prefabricated metal posts and high strength ceramics such as all-zirconia, all alumina or lithium disilicate restorations. Works excellent on implant abutments.

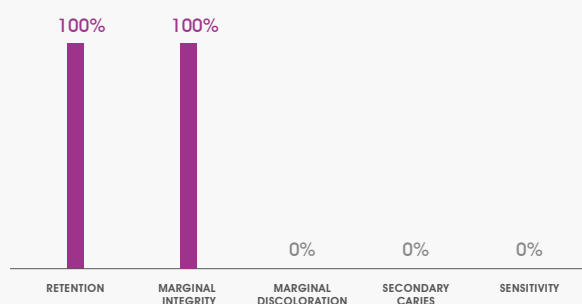
3-Year Follow-Up Study Recall Data

PROVEN! Outstanding performance*

Now a 3-year follow-up study confirms the many handling and long-term benefits that are immediately appealing for practitioners and patients alike...

- No sensitivity
- Exceptional retentive strength
- Superior marginal integrity
- No marginal discoloration
- No secondary caries

Results of a Three Year Clinical Study*



* Jefferies SR, Pameijer CH, Appleby DC, et al. A bioactive dental luting cement - Its retentive properties and 3-year clinical findings. *Compend Contin Educ Dent.* 2013;34 Spec No 1:2-9

100%
GUARANTEE

If you are not completely satisfied with Ceramir Crown & Bridge Luting Cement, simply return the unused portion for a full refund.

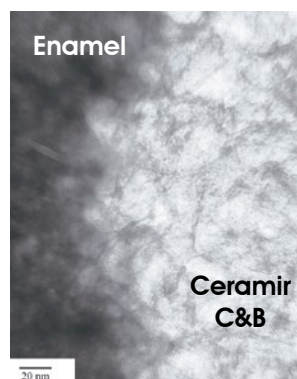
A Permanent and Stable Seal

PROVEN! Superior marginal integrity¹

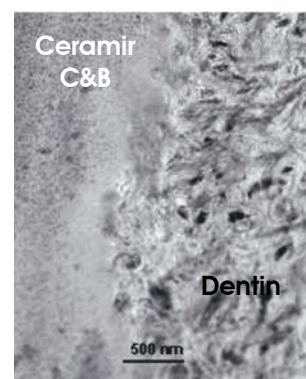
Ceramir Crown & Bridge has a unique capacity to create a marginal seal that will not degrade over time.

- High pH creates an environment that supports self-sealing properties
- Integrates completely with the tooth structure and creates a seamless interphase between tooth and cement
- Successfully integrates with all irregularities on the contact surface
- Maintains an alkaline environment to resist acid and bacterial decay

Seamless Nano-structural Integration



Ceramir Crown & Bridge has integrated with enamel *in vivo*



Ceramir Crown & Bridge has integrated with dentin *in vitro*

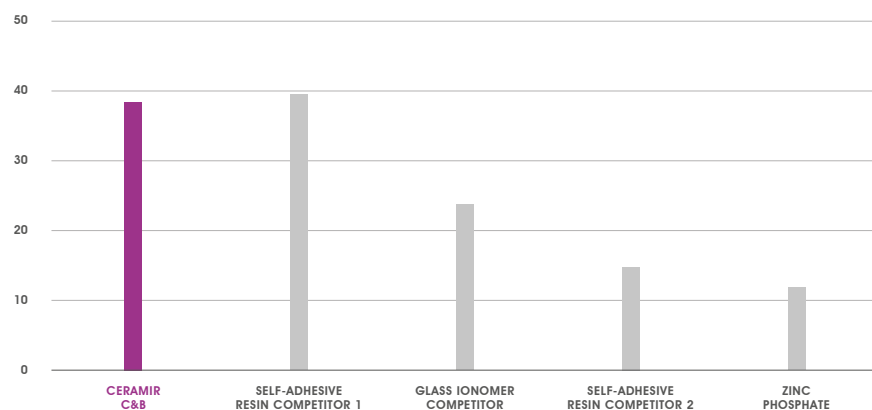
1. Jefferies SR, Pameijer CH, Appleby DC, Boston D, Galbraith C, Löf J, Glantz P-O. Prospective Observation of a New Bioactive Luting Cement: 2-Year Follow-Up. *J Prosthodont.* 2011. Published on-line, October 31, 2011.

Exceptional Strength and Durability

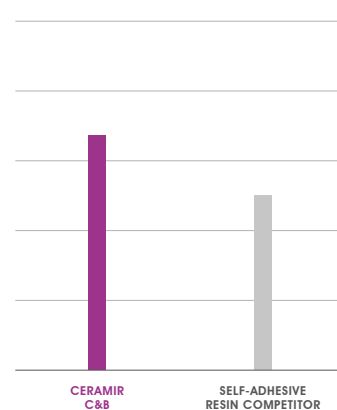
PROVEN! Resin-cement-like retentive and compressive strengths that protect the tooth over time²

Ceramir Crown & Bridge retention is equal or superior to self-adhesive resin cements.

Retention
(Gold Crowns) kg/force



Retention
(Zirconia Crowns) kg/force



2. C.H. Pameijer, et al. : A comparative crown retention test using XeraCem™, J. Dent Res. 2008; 87(B): 3099. Ceramir Crown & Bridge was previously called XeraCem.

Superior Biocompatibility

PROVEN! Non-irritating to the pulp – based on undisputed histological evidence³

- ZERO post – operative sensitivity*⁴
- Similar to hydroxyapatite
- Thermal properties similar to dental tissue helps minimize stress
- Five-year in vivo calcium aluminate study proves biocompatibility⁵

* No cement related post-op sensitivity was reported in clinical studies, handling evaluations or post market surveillance among more than 25,000 patients.

3. Pameijer CH, Jefferies SR, Lööf J, Hermansson L, Wiksell E. In vitro and in vivo biocompatibility tests of XeraCem™. J Dent Res. 2008; 87(B):3097.

4. Jefferies SR, Pameijer CH, Appleby D, Boston D, Galbraith C, Lööf J, Glantz P-O. Prospective Observation of a New Bioactive luting Cement: 2-Year Follow-Up. J Prosthodont. 2012;21:33-41.

5. Kraft L, Saksim M, Hermansson L, Pameijer CH., A five-year retrospective clinical study of calcium-aluminate in retrograde endodontics. J Dent Res 2009; 88(A): 1333.

Easy to Use and Handle

PROVEN! Clinicians report ease of use and easy seating⁶

- No etching, priming, bonding or conditioning necessary - Saves Time!
- Moisture tolerant – no need for keeping the preparation dry
- Unique consistency – makes seating of the restoration effortless
- FAST and EASY clean-up – excess material is easily removed



Ceramir® Crown & Bridge used with all-lithium disilicate crowns. Photos courtesy of Lou Graham, DDS.

6. Jefferies SR, Pameijer CH, Appleby D, Boston D, Galbraith C, Lööf J, Glantz P-O. Prospective Observation of a New Bioactive Luting Cement: 2-Year Follow-Up. J Prosthodont. 2012;21:33-41.

Comparison of Ceramir C&B to other Dental Material Classes (data on file)

	CERAMIR C&B	SELF-ADHESIVE RESIN	RESIN-MODIFIED GI	GLASS IONOMER
Sets at high pH, forms apatite	✓			
No post-op sensitivity	✓			
Exceptional retentive strength	✓	✓		
Superior biocompatibility	✓			
No etching, priming, bonding or conditioning	✓	✓	✓	
Easy clean-up	✓		✓	
Shown in preliminary study to close artificial marginal gaps ⁷	✓			

7. Jefferies SR, Fuller AE, Boston DW. Preliminary evidence that bioactive cements occlude artificial marginal gaps. *J Esthet Restor Dent*. 2015. doi: 10.1111/Jerd.12133. [Epub ahead of print]

- 40020 CERAMIR APPLICATOR**
- 40030 CERAMIR C&B QUIKCAP 20-PK**
(.17ml Capsules - 20/box)
- 40031 CERAMIR C&B QUIKCAP INTRO KIT**
(10 Ceramir C&B QuikCaps (.17ml), 1 Applicator)
- 40032 CERAMIR C&B QUIKMIX**
(1x15g Powder, 1x10g (9ml) Liquid,
1x scoop, 1x mixing pad)
- 40033 CERAMIR C&B QUIKMIX, POWDER REFILL**
(1x15g Powder, 1 scoop)
- 40034 CERAMIR C&B QUIKMIX, LIQUID REFILL**
(1x10g (9ml) Liquid)



Doxa Dental AB, Sweden, parent company of Doxa Dental Inc., is renowned for its development of innovative and proprietary bioceramic technologies. Following extensive research, development and clinical studies, Ceramir Crown & Bridge, was successfully launched in Sweden in 2009 and in the United States, June 2011.

Impladend 3i™

ΕΙΣΑΓΩΓΕΣ ΟΔΟΝΤΙΚΩΝ ΕΜΦΥΤΕΥΜΑΤΩΝ

ΑΘΗΝΑ: Φωκίδος 57-59, 115 27 Γουδί, Τηλ.: 210.74.86.900

ΘΕΣΣΑΛΟΝΙΚΗ: Βασ. Όλγας 48, 546 42

Τηλ.: 2310.501.651, Fax: 2310.862.090

www.impladend.com • E-mail: info@impladend.com